

# Public Document Pack

## NORTH HERTFORDSHIRE DISTRICT COUNCIL

### CABINET PANEL ON THE ENVIRONMENT

THURSDAY, 9TH JANUARY, 2020

### SUPPLEMENTARY AGENDA

Please find attached supplementary papers relating to the above meeting, as follows:

Agenda No	Item
-----------	------

4.	<b><u>PUBLIC PARTICIPATION</u></b> (Pages 3 - 18)
----	---

To receive petitions, comments and questions from the public.

*Please note that speakers should register their interest to speak by midday two days before the meeting.*

*The Chairman has requested that a written submission of the content/subject of the presentation be submitted to [committee.services@north-herts.gov.uk](mailto:committee.services@north-herts.gov.uk) by the above deadline.*

*Those selected to make presentations will be advised the day before the meeting.*

Please find attached written submissions from Public Speakers

This page is intentionally left blank

**PLASTIC FREE**  
**ETCHWORTH GARDEN CITY**  
**SURFERS AGAINST SEWAGE**

## Becoming Plastic Free North Herts

**PLASTIC FREE**  
**- HITCHIN -**  
**SURFERS AGAINST SEWAGE**

NHDC should consider setting itself a goal to achieve Plastic Free North Herts status and identify a council officer who has a clear objective to achieve this status.

To meet this objective the council will need to co-ordinate with Plastic Free Volunteer Teams across the District. A possible structure for doing this is:

### District Strategic Group

Membership: Councillor(s), Council Lead Officer, BID representatives, Plastic Free Team representatives and Council Waste Officer

#### Activities:

- Manage District Wide Campaigns
- Ensure appropriate supporting services (e.g. litter collecting, and waste services)
- Providing regular meetings for sharing / ideas

### Plastic Free Teams in Towns

Membership: Plastic Free Team for Town and its linked villages

#### Activities:

- Visiting local businesses, community venues, schools and community groups
- Setting up events to promote plastic free living and litter picks
- Identifying barriers to reducing single-use plastic which need to be addressed by strategic group.

## Surfers Against Sewage Plastic Free District Requirements

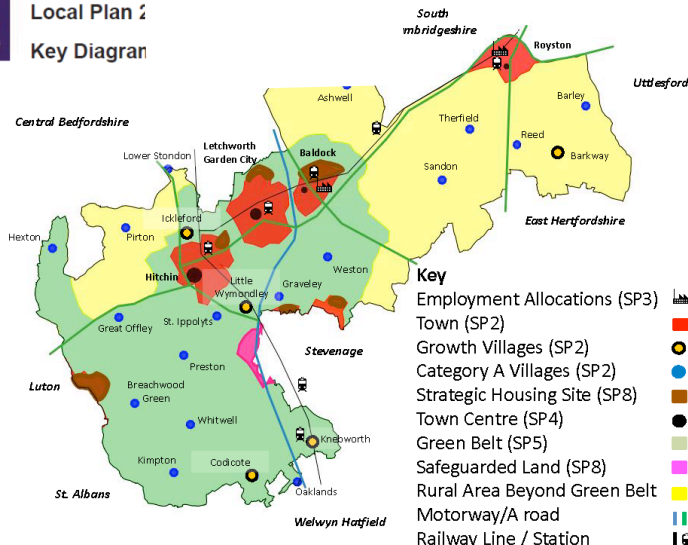
Support plastic free initiatives and the community groups working on them in your area.	✓
<b>Work with Plastic Free Community leaders on the resolution / motion supporting Plastic Free Communities.</b>	✓
Liaise with your community leaders to facilitate and promote the campaign locally.	✓
Encourage schools, businesses, community groups and individuals to get involved.	
Demonstrate leadership and set up a working group to examine the options available to reduce avoidable single-use plastic	
Perform a complete audit of avoidable, single-use plastic items used across council owned buildings and facilities.	
Develop a plastics strategy with specific objectives for eliminating avoidable single-use plastics. Link this to environmental policy, waste strategy and sustainable procurement policies where appropriate.	
Ensure appropriate recycling routes are available to capture plastic.	✓
Enable reuse and refill schemes to replace single-use plastic consumption.	✓
Consider how you can promote the reduction of single-use plastics across the council area and involve collection and waste disposal authorities in this process.	
70% of major towns, districts or boroughs should have achieved Plastic Free Community status with the rest working towards it.	

# Achieving Plastic Free NHDC



North Hertfordshire  
Local Plan 2

Key Diagram



## Towns

Hitchin	34266
Letchworth	33249
Royston	15781
Baldock	10280
Great Ashby	5701

## Moving Forward Together

### Plastic Free Campaigns to change Individual Behaviour

Run themed campaigns to change behaviours. e.g. switch to re-usable nappies, avoid Wet wipes, use a refillable water bottle, recyclable Christmas cards, wrapping and crackers....

### Facilitate Business Packaging Re-use

Set up a collection and distribution centre in towns to allow local residents and businesses to deposit and collect reusable packaging material.

**Become Litter Free** – Survey existing groups that undertake litter picks to see if the service for loaning equipment and disposing of rubbish collected can be improved with the aim of identifying how to increasing voluntary litter picks in the District.



### Promote a switch to re-usable take-aways containers

- Deliver a campaign to encourage all establishments that offer take-aways to accept and encourage (through a discount scheme) customers to bring their own take-away containers.
- Set up scheme to loan re-usable cups for events held in North Hertfordshire.
- Work with local BIDs to facilitate the introduction of a NHDC Cup Scheme, like the scheme introduced in Shrewsbury (<http://www.shrewsburycup.co.uk>), across the District.

**Help Us Become a Plastic Free Letchworth**

**Most wet wipes contain plastic and damage our environment**

That's why we need to start using more environmentally friendly alternatives. Alternatives to wipe wipes are washable wipes, a flannel, tissues, cotton wool, along with a small bottle of tap water.

Options which are kind to the skin, as they contain no chemicals or perfumes, low cost and as portable as a pack of wet wipes.

Changing to a make-up remover with cotton wool, or better still, a washable cleaning pad you could help the environment.

You could even crocheted some re-usable face cleaning pads! This simple switch can help you protect our environment and save money.

Remember: If you choose to continue to use wet wipes, dispose of them in the bin, don't flush them down the toilet.

**Transition Town Letchworth delivers community projects to support more sustainable lives**  
[TransitionLetchworth.org](http://TransitionLetchworth.org)



## Setting Up a Reuse Scheme For Packaging

Bubble wrap, air bags, padded envelopes and boxes are used to transport products between businesses and to final customers. A significant proportion of this packaging is single-use plastic. Businesses try as much as possible to reuse packaging but this is not always easy if they buy in bulk and sell in smaller quantities. The rise in online shopping has also led to increased packaging ending up in people's homes.

The Plastic Free Letchworth Team have found businesses that will take and reuse packaging. For example, the hospice shop will take bubble wrap and use this to wrap the crockery that they sell. Norton Way Gallery, a recognised Plastic Free Business in Letchworth, will also take bubblewrap and use this to protect paintings which are shipped to customers. Offers of Jiffy bags on Freegle get a swift positive response from multiple people.

Plastic Free Penzance have also recognised the potential to reuse packaging rather than send it to incineration or landfill and are trialling a Business Pack Swap Scheme ([www.plasticfreepz.co.uk/news/business-pack-swap-scheme-launches-2/](http://www.plasticfreepz.co.uk/news/business-pack-swap-scheme-launches-2/)). This scheme utilises a vacant shop and is run by volunteers. Donations can be made between 5:30pm and 6:30pm on a Tuesday and collections can be made between 5:30pm and 6:30pm on a Thursday. The scheme is initially open to local businesses but it is hoped to extend it to the general public.

### Proposal For Business Packaging Reuse Scheme in Letchworth

Local businesses would be asked to get involved and to initially identify what type and volume of packaging they purchase and what type and volume of clean potentially re-usable packaging they send to waste.

#### Activity 1:

- Businesses are 'manually' put in touch who can support each other by passing on surplus packaging so that it can re-used instead of being disposed of as waste.
- If it is found that there is significant waste reduction possible from this activity an online mechanism will be introduced to help businesses connect and pass on their unwanted packaging.

#### Activity 2:

Letchworth Library would run a trial scheme to receive agreed types of business packaging from the general public for reuse. The packaging would be sorted by type, and a selection made available for the public for a donation or price appropriate to its re-used state. The Library would also be given a list of businesses to contact who would be willing to collect any surplus of particular types of packaging. Businesses would be asked to make a donation to the library in return for packaging received.

The Library has been suggested as the hub for a community collection because:

- a) It is accessible and has a good range of opening hours, including early evening and the weekend.
- b) Offering this service could bring new users into the Library.
- c) Libraries are now seeking donations and if successful this scheme could bring in funds.
- d) The Library is a HCC service and this scheme would allow the council to demonstrate it is working with the community to address climate change.

Use of the Library is not essential for this scheme since alternative 'hubs' could be identified in and around the town centre.

This suggested scheme raises a range of practical considerations to be addressed. However if such a trial in Letchworth is successful the scheme could be adapted and replicated in other Hertfordshire towns.



## **Reducing the Plastic in Take-Away Food and Drink**

Take-away meals and drinks can involve a significant amount of single-use plastic. The advice from Surfers Against Sewage, who manage the Plastic Free Communities project, has been to encourage retailers to switch to compostable containers and cutlery. This will help move communities from oil based plastic that could end up polluting the environment for hundreds of years.

Switching to cardboard and wooden take-away solutions will leave people with items that they can currently recycle in North Hertfordshire (if its not contaminated by the food). However, other compostable containers, e.g. those made from corn starch or sugar starches cannot currently be recycled and will end up in landfill or incineration.

Crystalline PLA (corn starch or sugar cane), doesn't break down well in the natural environment as they require thermal hydrolysis. This means they are not that different to PET if they get into the rivers, seas and oceans, they can still cause a hazard to wildlife.

Tidy Planet have promotional videos showing their Rocket Composter being operated in a 'closed; environment where there is both green waste, food waste and 'Vegware'(a well known brand of compostable take-away products). Discussion with Tidy Planet on the possibility of using this technology in a Town Centre suggest that it will require an investment of about £65k and trained staff operating it to ensure the suitability and mix of materials going into the composter.

There are a number of reasons why compostables are not currently composted. These are:

- They don't add any nutrition to the soil.
- Recycling is difficult for operators as they cannot differentiate between compostables and conventional plastics. Recycling has only been tried for 'closed' collection areas where contamination risks are minimal.
- Crystalline PLA containers need to be mixed in a precise way with other feedstocks to break down effectively (e.g. food waste, green waste) and the composting processes need to be run for longer to ensure that the materials are fully digested.

Although compostables are promoted as an alternative to single-use plastic, the fact that they will not naturally compost means they are not a 'miracle' solution. Reusable take-away container solutions would be less wasteful and better for the environment than any solutions based on recycling single-use take-away containers.

Ideally customers would take a re-usable container to the take-away for their food and drinks, however, we recognise that customers don't always plan in advance to have a take-away and those that do may need some financial encouragement to bring their own containers.

The Plastic Free Communities in North Hertfordshire have a proposal for NHDC which consists of three strands of activities, all of which will allow local residents to have more opportunities to avoid single-use take-away containers. The three elements of the proposal are as follows:

- 1) NHDC and the Plastic Free Communities produce and deliver a campaign to encourage all establishments that offer take-aways to accept and encourage (through a discount scheme) customers to bring their own take-away containers.
- 2) NHDC to set up scheme to loan re-usable cups for events held in North Hertfordshire.

- 3) NHDC to work with the local BID groups to facilitate the introduction of a NHDC Cup Scheme, like the scheme introduced in Shrewsbury (<http://www.shrewsburycup.co.uk>), across the District

### **Activity 1: Campaign to Encourage Customers To Take Their Own Containers To Take-Aways**

The campaign will need to persuade both take-away managers and their customers of the benefit to the environment that can be achieved, without financial cost, by customers taking their own containers to collect their take-away. The campaign will need to address potential concerns, in particular, providing advice so establishments can be sure they will be compliant with environmental health requirements.

### **Activity 2: Event Loan Scheme**

Many community venues and schools are set up with reusable cups, crockery and cutlery which can be used for their regular activities. Occasionally these organisations hold an event that requires a larger volume of cups, crockery or cutlery and often the decision is made to use single-use disposable solutions at these events, for example school fairs or church open days.

Additionally, many community venues either choose not to, or are not set up to provide occasional hirers with cups, crockery or cutlery. Having a local scheme where people could hire reusable cups, crockery and cutlery for their special events would also provide hirers of community venues with a way to avoid single-use plastic.

Supermarkets have schemes to loan glasses when they sell alcohol for events, but this does not provide a solution for events where organisers need to avoid glass due to the potential for breakages and injury or where there is no alcohol required.

It is proposed therefore that a loan scheme be put in place which would provide:

- Reusable plastic 1 pint cups, 1/2 pint cups, tumblers and wine goblets<sup>1</sup>.
- A washing and drying service for returned loaned cups– this could be a ‘new service’ or could be a provided through an agreement with local catering establishments.
- Local storage, return and collection points in NHDC major towns – this could be linked to the cleaning service or it could be a community venue such as the library.
- Booking system

An event such as the Standalone 10k will use about 3200 cups, school and community group events would need volumes in the 100s. A loan fee would be set to cover the cost of the service which would allow the service to break even in its first year. The loan price should be competitive to the price of single-use solutions.

### **3) NHDC Cup Scheme**

The Shrewsbury Cup (<http://www.shrewsburycup.co.uk>) provides an example of how a scheme could work. Organisations pay a pound for each reusable cup that they have delivered to them. They then charge a returnable deposit of a pound to customers. When a cups is returned undamaged (not necessarily clean) to any participating outlet the customer receives their pound back. The cup can then be washed and reused. If a shop receives more cups than it has given out they can be collected by the ‘Cup Scheme’ co-ordinator for pound each. Take-away establishments will benefit by the saving on disposable cups. Customers benefit through having the ability to have a take-away drink without harming the environment or having to go equipped with a cup.

### **Summary**

This proposal provides the building blocks to switch to a way of living where re-usable take-away containers become the norm. For people who are prepared to take their own containers it ensures that they are supported to do this through Activity 1. Activities 2 and 3 are a first step to a deposit scheme for reusable containers. The proposal is to put in place an economically viable event loan scheme for cups and a deposit cup scheme, but there is the potential to extend this beyond cups into other take-away containers if it proves popular and successful.

1

**Manufacturers of Re-usable Plastic Containers**

<https://www.ecocupshop.co.uk>

<https://happycups.co.uk>

<http://www.green-goblet.com>

<https://www.cater4you.co.uk/acatalog/Unbreakable-Wine-Glasses.html>

<http://www.johnsonscce.co.uk/index.php?route=product/category&path=1020>



## **SUBMISSION FROM BALDOCK BEATS WASTE (09.01.19)**

### **What do we want NHDC to do about waste?**

#### **A Consistent Waste Disposal Service**

Waste Aware's Duncan Jones made clear in a recent talk in Baldock that what this area, this county and this country need is a consistent waste disposal service which informs the public fully and encourages the public to make the right choices and carry out effective waste disposal. This would facilitate a higher level of recycling at less cost to public and environment. At the moment different areas of Hertfordshire, let alone different parts of the country do things differently and this confuses everyone's efforts to recycle. I would ask NHDC to support all efforts to get this in place.

#### **Publicity and Encouragement**

We would like more publicity from NHDC about what they are doing about Waste and recycling (eg no single use plastic/ water bottles in their offices, projects to help particular groups) and to encourage businesses, schools and restaurants working to reduce waste and their efforts to go plastic free. We need more than the odd email or Facebook post which reaches only the few if they're looking. Perhaps a weekly page in the Comet and monthly billboards conspicuous in each town.

#### **Rubbish Clearance from approach roads**

The NHDC should take more responsibility for clearing rubbish from the approach roads into towns which might not be covered by normal cleaning agencies as town centres are. Could people on community service be asked to do this? It would be great if NHDC could organise litter-picking sessions for members of the public to join or just more freely lend out the simple apparatus required.

#### **Stopping Food Waste at home**

Food Waste is a difficult problem with several facets. Most food waste occurs at home (portion size, overbuying, bad storage, over emphasis on food labels, lack of family knowledge passed on) and since the teaching of food in schools has been run down nationally many people grow up with a haphazard sense of food use which leads to waste. The local councils could supply information in public places and run free courses in schools and other public places to help improve awareness e.g. offer to support PSHE lessons.

#### **Supporting Shops and restaurants/ cafés**

Shops and restaurants should be given more encouragement to give leftover food to the public through food banks, homeless charities and places like the Best Before Café in Letchworth. More towns could be served by this. NHDC could help by providing transport for this food and by creating a "register" of potential donors and receivers.

#### **Supporting Voluntary Local Events**

We have some very successful public events in local towns, for instance music festivals food festivals charity sporting events, which create a lot of publicity and increased footfall for the towns and their businesses. However, they can also create more public food waste and other rubbish, some of which is recyclable. Rather than penalising the organisers and their volunteers for the behaviour of their supporters how much better would it be if the council would provide extra rubbish bins and recycling bins and bins for food waste only? With a council presence at the events I'm sure most people would be only too happy to comply with the sensible rules which keep their town clean. The fact that they don't necessarily at the moment is surely because the facilities are not provided as a routine by their council with their money. The council need to be seen to be leading these things. For all the waste to be treated as rubbish whatever its type and thrown into landfill is appalling.

### **Baldock Beats Waste's group list of ideas**

My group did send a list of their suggestions for NHDC to consider some time ago and I believe that NHDC are taking some of these up already like "split" waste bins (recyclable/rubbish) in ALL towns as already in Hitchin or multi designated bins (e.g. rubbish/paper/plastics/food) as in other countries like Germany. We need these provisions as soon as possible.

### **Chewing gum**

Chewing gum is a real blight on our streets but provision for its collection is limited and not obvious. The main material from gum can be extracted and as it is a plastic it can be recycled into useful stuff. GUMDROP uses waste chewing gum to make bins for chewers to drop their gum into.

Here are a couple of other points from our list concerning waste:

**Litterpicking stations** round Baldock as well as Greenway. They could be no more obtrusive than fire fighting equipment points. Bins there for refuse/ recycling what is collected.

## **SUBMISSION FROM BEST BEFORE CAFE**

We'd like to make those attending the Environmental Panel in Letchworth on 9th Jan aware of the extent of the food that is wasted by supermarkets over the Christmas period.

On Christmas Eve, volunteers from Best Before Cafe, Wilbury Community Forum and Feed Up Warm Up collected surplus food from 6 stores of the cafes usual 15.

Best Before Cafe volunteers alone picked up approx 1 kg tonne of food that was in date and perfectly edible. The supermarkets had to write off two days (Christmas Day and Boxing Day) worth of food, this is why the amount was so large.

My point is, that we only picked up a fraction of what was on offer. Our operation is too small to be able to cope with this amount. We needed lorries to be able to collect each store's quota!

We also had a limited amount of people to which the food could go to. We provided food for 30 families (two large crates of fruit/veg for each) on Christmas Eve but still have crates of vegetables left!

If this happens again next Christmas, we'd like some help and some ideas on how to distribute this food effectively and efficiently to prevent it from going into landfill and therefore protect the environment.

Please could I have a couple of minutes at the Environmental Panel to speak about this issue.

Look forward to hearing from you

All the best

Suzy Holding and the Best Before Cafe team

This page is intentionally left blank

# Terra Cycle Recycling

Terra Cycle are a company that recycle hard to recycle plastics. They offer zero waste boxes to recycle specific waste in, which are charged for. Alongside this working with the major producers of hard to recycle plastics they offer free recycling schemes for the public to participate in. Often these offer points which can be spent in their shop or donated to charity and converted to cash. Terra Cycle then recycle this waste into new products saving it from landfill.

Through Plastic Free Letchworth and supported by Transition Town Letchworth, Wilbury and Icknield Schools Parents Association (WISPA) and Bamboo Turtle I have set up a public collection point for the waste detailed in *appendix 1* in Bamboo Turtle. We collect 18 waste streams ranging from crisp packets to cleaning product packaging with more streams frequently added!

This started in July 2019 and to date we have recycled 116.5kg of waste and generated 233£ for charity.

That is 116.5kg of waste diverted from Purple general waste Bins in Letchworth. This total ignores the vast weight in Pens, Coffee Pods, and pet food that we have collected and dropped off at other local pre-existing collection points.

Funds raised largely benefit Icknield and Wilbury Schools with some schemes benefiting other charities.

Waste is collected in the combined bin at Bamboo Turtle. It is transferred to the WISPA 6\*4ft shed at Wilbury school by a small group of volunteers, where it is sorted again by a small group of volunteers. Waste is then bulked up and shipped to Terra Cycle via courier. Over time as Terra Cycle has become more popular the minimum weights (above which points are earned) for each scheme have increased meaning we are having to store increasing amounts of waste. With the number of waste streams (ever increasing as more manufacturers sign up), we collect and the increased amounts of waste we need to collect before shipping we are struggling for space in the shed. Currently realistically only one person can work sorting at once. Previously we could work in 2's or 3's making it a sociable occasion.

In recent months Wilbury school have established Eco Warriors (1 child per year group) and among many other things they have started collecting some Terra Cycle waste streams through the school (Crisp packets, Oral Care, Bread Bags and Pringles Tubes). The success of this has been staggering and the amount of waste that has come in has amazed us. The children, staff and parents totally get it and the education about waste this has generated is amazing. We ran a disco at the school recently and the children were looking and asking where the crisp packet recycling bins were rather than just binning them! At the end of the night I only found 3 bags in the general waste bin! They totally get it and this is after only a couple of months. They are our future and to see this buy in has totally inspired me.

I hope you agree this is great progress. It's not perfect as to my knowledge none of this is circular recycling it's all down cycling. The plastics are not returned to their original material and re used to make say another crisp packet instead they are down cycled into benches play equipment or plastic sheeting. This said at least they are recycled and this recycling is payed for by the producers of the waste! This fact alone is amazing I hope you agree and will push them to find waste free or recyclable packaging! We are not going to change the masses or supermarkets overnight and force them to move to waste free solutions. Until this becomes the norm Terra Cycle helps plug the gap.

So how can NHDC help? Increase people's knowledge of the scheme so more waste is recycled. With this however comes the problem of processing and storing the waste which is already a problem. My ideal solution would be for members of the public to bring and sort their own waste. To date we have not found a location where this would be possible. The venue would need to be inside, dry and open regular hrs together with some sort of presence to keep it secure. Do the council have any such locations? Ideas: Upstairs in the Library, A Library store room, the un-used floor of the council offices, the old council offices next to the Library.








An idea I have had and would like to take forward would be to use a vacant shop unit in the town to sort and store the waste. This could be open regular set hours (dictated by volunteer availability) so people can bring their own waste and sort it themselves or help sort waste collected. The waste sorting boxes and bulked up waste would be left on display together with promotional material so people can see just how much waste is generated and the negative impact this is having on the world we live in. If we were to manage to secure the use of a shop unit from an owner (Heritage foundation or Garden Square) would it be possible for the council to wave the business rates on the premises? I believe it is these that are the biggest stumbling block to gaining such premises.

With the use of a shop unit secured its use could be developed beyond Terra Cycle. We could collect un-wanted packaging and pass it onto new users for a donation say. We could host a repair workshop again for donations for items repaired. These funds could fund future new endeavours in local waste reduction initiatives...

Ultimately, I would love to see the need for Terra Cycle recycling disappear and we move to a waste free world. Having walked my street this week on the post-Christmas recycling day I can see we are a long way off this. Since Christmas in only 2 weeks Terra Cycle alone has generated 10 sacks that need sorting!

I must thank Transition Town Letchworth for their support. Bamboo Turtle for hosting the collection point. Wilbury school for allowing the use of their shed 24hrs a day as a sorting plant and buying into the idea. Lastly but most importantly it's the volunteers who help. It's a small bunch but without them this could not happen.

*Appendix 1: Waste collected through Terra Cycle.*

Recycling Scheme	Accepted Items	Brands Accepted	Beneficiaries
EllaCycle (Baby Food Pouches)	Baby food pouches & lids Snack packets	All All	
Aqua Optima Water Filters	Universal Evolve 30 & 60 Day Original 30 & 60 day	Aqua Optima	
Hygiene Home	Fragrance twin pack plastic sleeves	All	
	Flexible packaging: stain remover, dishwashing: tablet packaging/salt bags, home wipes, cleaning product re-fill	All	
	Dishwasher cleaner/freshener outer packaging	All	
Pringles Cans	Pringle Tubes Plastic lid & seal	Pringles	
Biscuit & Snack Wrapper	None savoury biscuit wrappers Cracker wrappers Cake wrappers	All	
Personal Care & Beauty	Flexible plastic wipes packaging Plastic roll on deodorants Hair colourant kits (no bottle & cardboard) Plastic pots & tubes Caps, pumps & trigger sprays Mask packaging & blue film	All	
Bread Bags	LDPE (4) Bread Bags	All	
Confectionary	Chocolate Bar Wrappers Chocolate & sweet pouches / bags Chocolate & sweet multi pack outer packaging	All	
Swisse Me	food pouches	Swisse Me	
Ring Carriers	Can Plastic Ring Carriers	All	
Kinder Chocolate	Flexible Plastic Packaging Chocolate Wrappers Aluminium Foil Wrappers Rigid Plastic Egg & Packaging	Kinder Chocolate	
L.O.L. Surprise	Outer & Inner Plastic Wrappers Display cases Figurines & their accessories	L.O.L. Surprise	
Nuts, Popcorn, Crisps and Pretzels Packets	Crisp packets Nut packets Pretzel packets Popcorn packets	All	
Air & Home Care	Flexible Wipe Packaging Plastic bottle caps / trigger heads / pumps Plastic airfreshener packaging Plastic air fresheners & cartridges	All	
Writing Instruments	Highlighters Correction fluid pot Pens Markers	All	
Pet Food	Wet pouch's Treat flexible plastic pouches Dry flexible plastic packaging	All	
Oral Care	Toothpaste tubes & cap Toothbrush Powered toothbrush heads & packaging Toothbrush outer packaging Toothpaste cartons	All	
Tassimo & Kenco	Tassimo flow wrap packaging Tassimo T-Disc's L'OR Capsules Kenco plastic lids Kenco Eco Refill packs	Tassimo Kenco	



## Presentation to NHDC Environmental Panel On Waste Reducing Waste



Produce and deliver a waste strategy which includes a plan which incentivises residents to reduce all types of waste.

Ideally this should be achieved without further investment in bins. This could be achieved by:

- Moving to 3, then to 4 week collection cycle for purple, grey bins.
- Offering residents a discount if they move to 4 week service (easily administered by marking bins for households opting for a 4 week service).



Work with Plastic Free Letchworth, Hitchin, Baldock and Royston to Undertake the activities required to achieve Plastic Free Status for North Herts.

## Presentation to NHDC Environmental Panel On Waste Re-use / Repair / Re-purpose

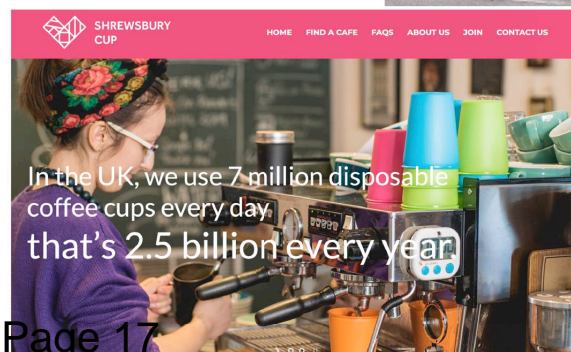


Water fountains, free cloth nappy packs for new parents, cloth nappy exchanges and selling items taken to recycling centres all illustrate how councils are demonstrating leadership in 'Reuse'.



NHDC could go further by:

- Supporting town and villages in setting up a reusable cup service for local events (see Shrewsbury Cup for an example).
- Investigate providing discounted business rates to encourage repair / repurposing businesses.



## Presentation to NHDC Environmental Panel On Waste Recycling



Ensure that the council provided waste service to organisations, businesses and schools supports the maximum level of recycling.

Ensure waste from public bins are recycled by either providing segregated bins or ensuring waste goes for sorting.

Provide of a central collection and sorting point to feed local charity Terracycle collections (Terracycle recycle hard to recycle plastic items).

Have a monthly educational campaign to switch people from a non-recyclable option to ideally a reusable option or at least a recyclable option.

Set up community compost sites on estates where gardens are small, allowing residents to

- [Avoid the brown bin charge for taking what may be very small amounts of garden waste.](#)
- [Provide a local source of compost for people to use in pots, gardens and allotments.](#)
- [Reduce the carbon associated with collecting and transporting garden waste.](#)

Provide composting workshops in addition to access to discounted compost bins for residents.

Work with Herts Waste Partnership to identify potential for establishing a recycling plant for at least one recyclable material in the district.